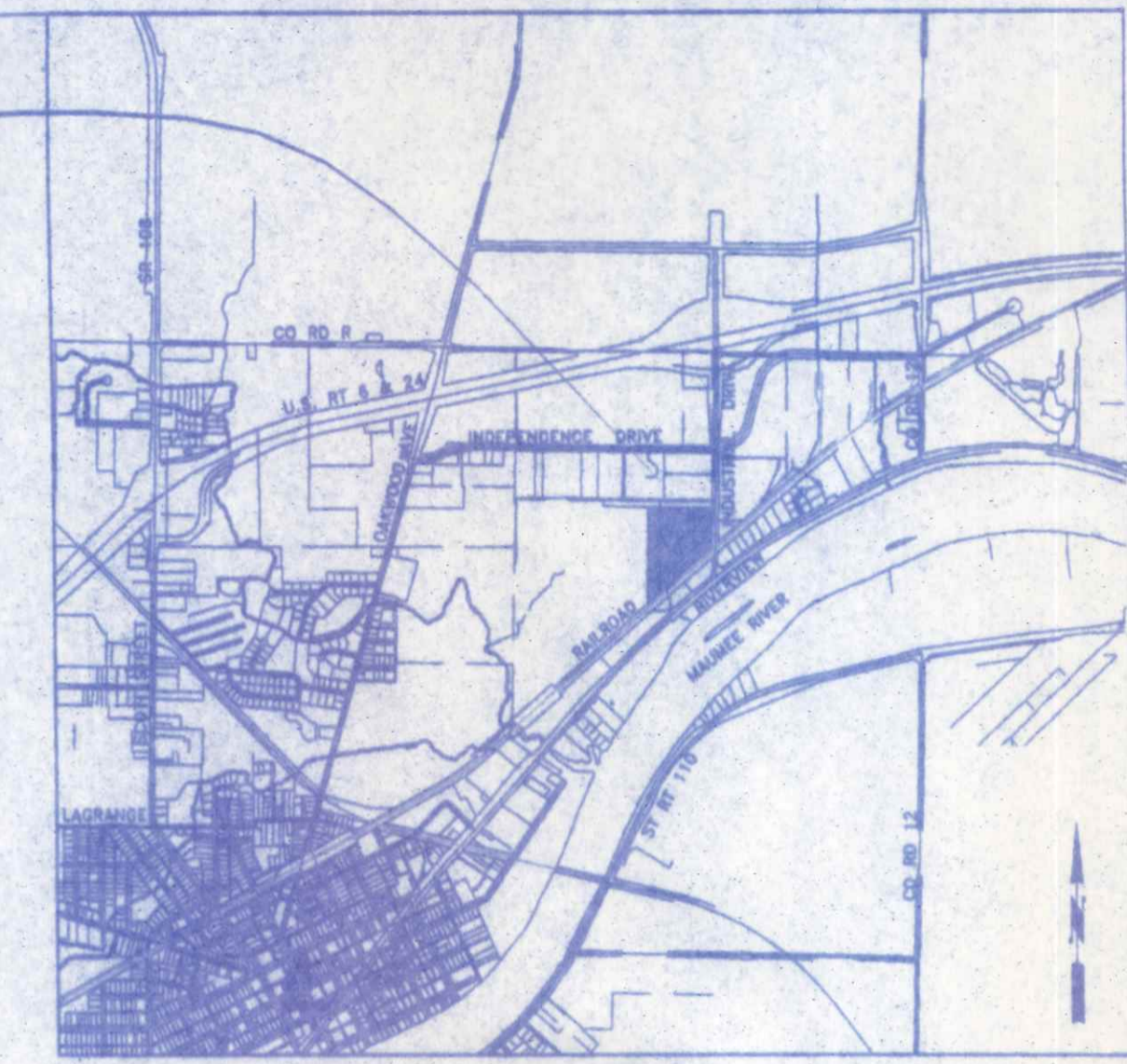


Leader Engineering-Fabrication, Inc.  
Vol. 237, Pg. 426

City of Napoleon  
4.995 AC.  
Vol. 218, Pg. 433

PROJECT LOCATION



LOCATION MAP

BUILDING DATA: NO CHANGES

**EXISTING BUILDING "A":**  
USE GROUP: "F-1" & "S-1" MODERATE HAZARD FACTORY & STORAGE  
MIXED USE - NONSEPARATED (Sec. 508.3 O.B.C.)  
CONSTRUCTION TYPE: 2-C (now 2-B), w/FIRE SUPPRESSION  
AREA: ALLOWABLE: 15,500 SQ. FT. (Table 503 2-C (now 2-B) Const.)  
UNLIMITED PER SEC. 507.0 O.B.C.  
EXISTING: 36,080 SQ. FT.  
2001 ADD'N: 17,500 SQ. FT.  
TOTAL EXISTING: 53,580 SQ. FT.  
HEIGHT: ALLOWABLE: 75' - 1 STORY (UNLIMITED AREA BUILDINGS)  
EXISTING: 37' - 1 STORY  
MAXIMUM OCCUPANCY LOAD: 145 PERSONS (Estimated Actual)  
MAXIMUM EXIT ACCESS TRAVEL DISTANCE: 250' ALLOWABLE  
200' ± PROPOSED

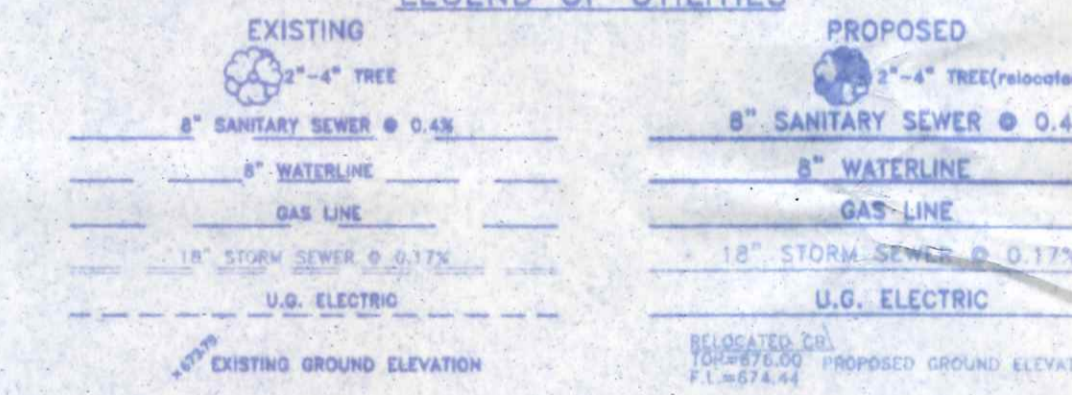
**EXISTING BUILDING "B":**  
USE GROUP: "F-1" & "S-1" MODERATE HAZARD FACTORY & STORAGE  
MIXED USE - NONSEPARATED (Sec. 508.3 O.B.C.)  
CONSTRUCTION TYPE: 2-C (now 2-B), w/FIRE SUPPRESSION  
AREA: ALLOWABLE: 15,500 SQ. FT. (Table 503 2-C (now 2-B) Const.)  
UNLIMITED PER SEC. 507.0 O.B.C.  
EXISTING: 30,075 SQ. FT.  
HEIGHT: ALLOWABLE: 75' - 1 STORY (UNLIMITED AREA BUILDINGS)  
EXISTING: 40' - 1 STORY  
MAXIMUM OCCUPANCY LOAD: 15 PERSONS (Estimated Actual)  
MAXIMUM EXIT ACCESS TRAVEL DISTANCE: 250' ALLOWABLE  
200' ± PROPOSED

**EXISTING BUILDING "C":**  
USE GROUP: "B-1" & "B" MODERATE HAZARD STORAGE & OFFICE  
MIXED USE - NONSEPARATED (Sec. 508.3 O.B.C.)  
CONSTRUCTION TYPE: 2-C (now 2-B)  
AREA: ALLOWABLE: 17,500 SQ. FT. (Table 503 2-C (now 2-B) Const.)  
EXISTING: 10,829 SQ. FT.  
HEIGHT: ALLOWABLE: 55' - 2 STORY  
EXISTING: 28' - 1 STORY  
MAXIMUM OCCUPANCY LOAD: 32 PERSONS (Estimate)  
MAXIMUM EXIT ACCESS TRAVEL DISTANCE: 250' ALLOWABLE  
200' ± PROPOSED

SOIL BEARING CAPACITY (THIS PROJECT): 1,500 p.s.f. (Class 5 Soils)

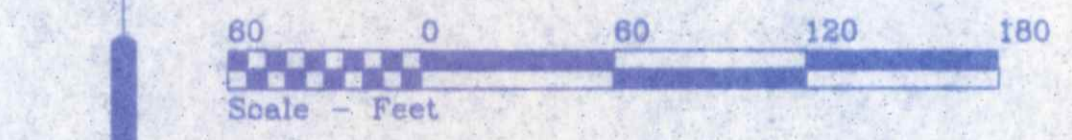
- GENERAL NOTES:**
- RESTROOMS FOR EMPLOYEES ARE AVAILABLE IN ADJACENT BUILDINGS ON THE PROPERTY WHICH ARE UNDER THE SAME OWNERSHIP AND CONTROL.
  - ALL WORK AND MATERIAL SHALL BE IN ACCORDANCE WITH THE REQUIREMENTS OF THE CITY OF NAPOLEON.

LEGEND OF UTILITIES



PART OF THE WEST 1/2, FRACTIONAL SECTION 7, T-5-N, R-7-E, LIBERTY TOWNSHIP, HENRY COUNTY, CITY OF NAPOLEON, STATE OF OHIO

ZONING DISTRICT = I-2, OPEN INDUSTRIAL



- INDEX OF SHEETS:**
- SITE PLAN, LOCATION MAP, BUILDING DATA & INDEX OF SHEETS
  - PLAN VIEW, CONSTRUCTION NOTES & GENERAL SPECIFICATIONS
  - EXTERIOR VIEW, CONSTRUCTION DETAILS & CROSS SECTIONS

OLDCASTLE PRECAST, INC.  
TRUCK DOCK ADDITION~BUILDING B

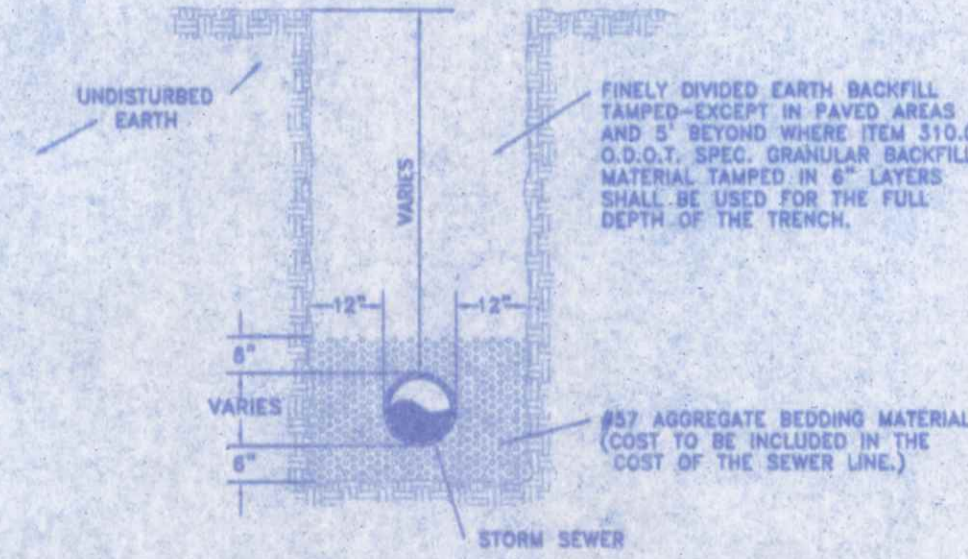
DIRECTORY: C:\ND\CARSON	FILE NAME: \proper\pl2014	REVISED:
DRAWN BY: R.D.S. ~ dbar NEW DIMENSIONS	SCALE: NOTED	DATE: NOV., 2014
SITE PLAN, LOCATION MAP, BUILDING DATA & INDEX OF SHEETS		DRAWING NUMBER:
		1 of 3

CLOVERLEAF COLD STORAGE  
PARCEL C  
5.000 AC.

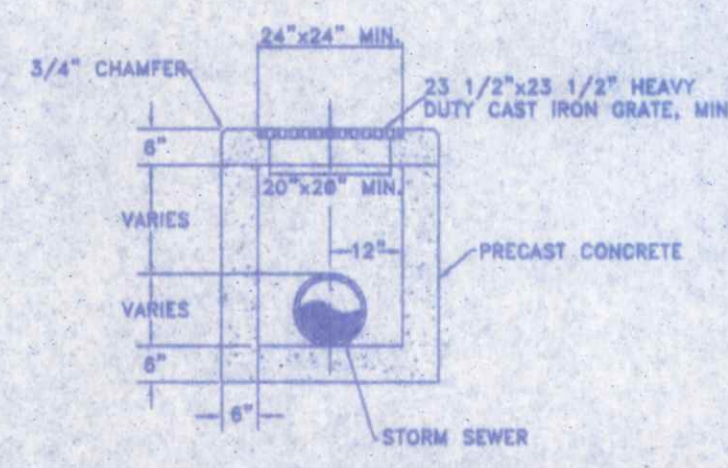
INNOVATIVE TOOL & DIE, INC.



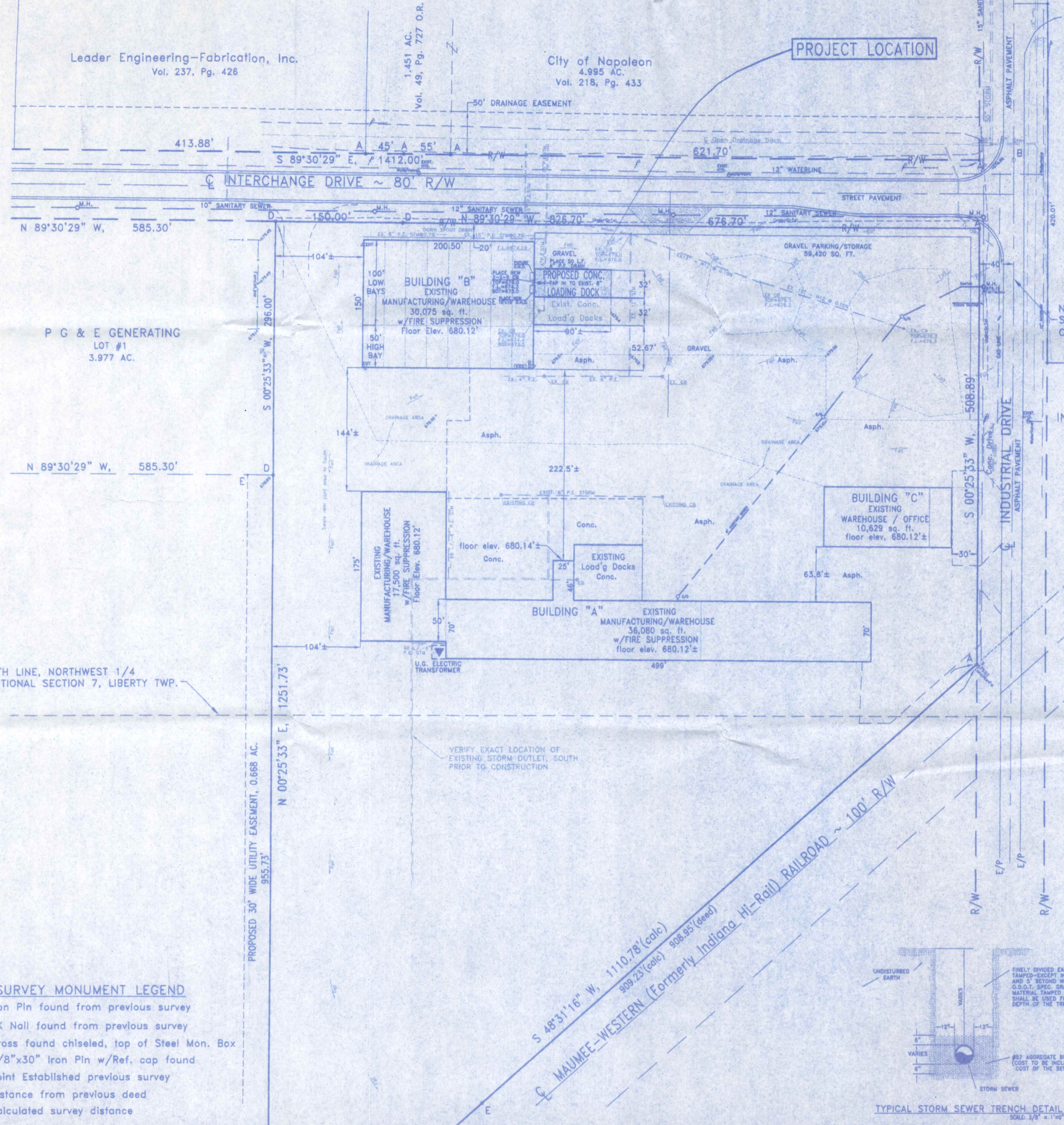
TYPICAL CONCRETE PAVEMENT SECTION  
SCALE: 3/8" = 1'-0"



TYPICAL STORM SEWER TRENCH DETAIL  
SCALE: 3/8" = 1'-0"



2-2-B CATCH BASIN DETAIL  
SCALE: 3/8" = 1'-0"



- SURVEY MONUMENT LEGEND**
- A • =Iron Pin found from previous survey
  - B ◦ =PK Nail found from previous survey
  - C ▷ =Cross found chiseled, top of Steel Mon. Box
  - D ◻ =5/8"x30" Iron Pin w/Ref. cap found
  - E • =Point Established previous survey
- (deed)=Distance from previous deed  
(calc)=Calculated survey distance

PROPOSED 30' WIDE UTILITY EASEMENT, 0.668 AC.  
955.73'

VERIFY EXACT LOCATION OF EXISTING STORM OUTLET, SOUTH PRIOR TO CONSTRUCTION

MAUMEE-WESTERN (Formerly Indiana, HI-Rail) RAILROAD ~ 100' R/W  
S 48°31'16" W, 1110.78' (calc)  
909.23' (calc) 908.95' (deed)

P G & E GENERATING LOT #1  
3.977 AC.

SOUTH LINE, NORTHWEST 1/4 FRACTIONAL SECTION 7, LIBERTY TWP.